



Anglophone  
Africa Regional  
Learning Hub



ASIA-PACIFIC  
Learning Hub



Regional Platform  
EECA



Hub Régional  
Afrique francophone



Learning Hub  
Latin America  
and the Caribbean



Middle East &  
North Africa  
Learning Hub



MENA  
Rosa



SCALING UP  
HARM REDUCTION IN MENA



A Guide for Communities

# Grant Adaptation Measures

*for Global Fund Grant Cycle 7*



Vía Libre / LAC Platform  
June, 2025

**Grant Adaptation Measures for Global Fund Grant Cycle 7 – A Guide for Communities** is a document prepared the Latin America and the Caribbean Regional Platform for Support, Coordination and Communication of Civil Society and Communities (LAC Platform)

First edition

Lima, Peru. June 2025

© Vía Libre

Jr. Paraguay 490, Cercado de Lima, Lima 1, Peru

[vialibre@vialibre.org.pe](mailto:vialibre@vialibre.org.pe) | [www.vialibre.org.pe](http://www.vialibre.org.pe) | [www.plataformalac.org/](http://www.plataformalac.org/)

Telephone: (+511) 203-9900

Executive Director

Dr. Robinson Cabello

Authors

Anuar I. Luna Cadena

Technical and Editorial Supervision

Annabelle Metzner

Niluka Dilshan Perera

Layout & Desing

Juan Carlos Rodríguez Espinosa

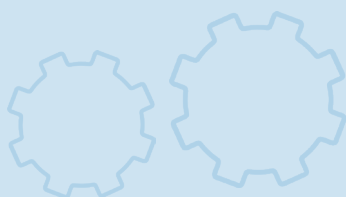


The LAC Platform is implemented by Via Libre with financial support from the Community Engagement Strategic Initiative (CE SI) of the Global Fund to Fight AIDS, Tuberculosis and Malaria (Global Fund).

Views expressed in this document are those of the author and do not necessarily reflect the views of the Global Fund.

# Table of Contents

1.-	Background .....	2
2.-	What is Deferral? .....	3
3.-	What is Reprioritization and Revision? .....	4
4.-	General Considerations for Programmatic Reprioritization .....	7
5.-	Core Priorities for Reprioritization: Strategic Guidance for Countries .....	10
6.-	Community Engagement in GC7 Reprioritization and Revision .....	12
7.-	Quick Tips for Community Engagement .....	14
8.-	Quick Tips for Programmatic Reprioritization .....	16
8.-	Additional Resources .....	17



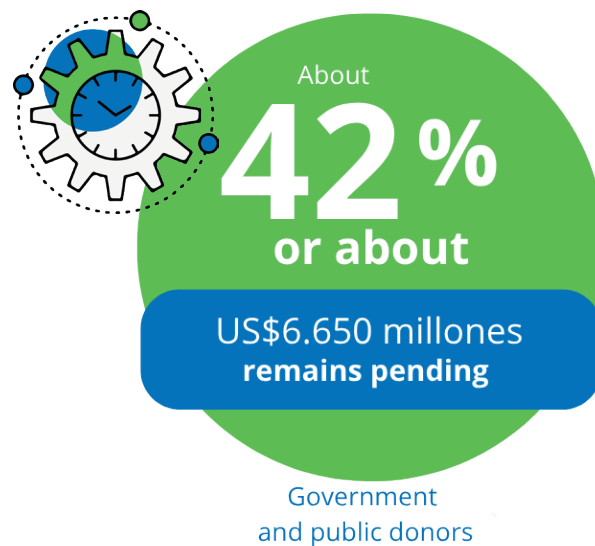
# 1. Background

The funding landscape for global health programs is undergoing significant and rapid changes. **The Global Fund to Fight AIDS, Tuberculosis and Malaria** (the Global Fund) is subject to these forces while simultaneously acting to support countries and communities in responding. To date, the Global Fund's priority has been to ensure the continuity of approved programming, given these significant disruptions.

The Global Fund is funded by public and private donors on a three-year replenishment cycle. Once resource commitments have been made, donors must transfer the funds to the Global Fund Secretariat for their implementation. This process is called "pledge conversion".

As of May 27, 2025, the Secretariat has received US\$9.03 billion from its donors for **grant cycle 7 (GC7)**.

About 42%, or about **US\$6.65 billion**, remain pending<sup>1</sup>. However, some donors have not been clear about their intentions to transfer the remaining pledged resources, while others have delayed the transfer of funds.



This situation poses a notable financial concern for the Global Fund. During its **53rd meeting in May 2025**, the **Board of the Global Fund** analyzed and discussed in depth the effects of reduced pledge conversion for GC7 on the Global Fund's operations. To prevent a funding shortfall, the Global Fund has introduced a two-pronged approach: temporarily pausing select components of grant implementation until funds are received ("**slowing down**") and reducing a portion of national grant budgets while reassessing and prioritizing key interventions ("**reprioritization and revision**").

You can find more details on what the Global Fund has communicated to CCMs on **Update** and **GC7 Reprioritization** on the Global Fund website.

<sup>1</sup> Global Fund pledges and contributions report as of 17 May 2025  
Available at: <https://www.theglobalfund.org/en/government/>

## 2. What is Deferral?

In April 2025, the Global Fund asked countries to defer or pause investments that are less critical or time-sensitive while ensuring the continuity of essential and life-saving programs. This shall help countries to slow down spending in some areas to maximize the funding available for the broader reprioritization and reinvestment exercise. The Global Fund Secretariat did not provide a specific list of activities that should be paused, but provided the following examples of the types of activities that should be considered:

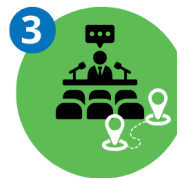
**Illustrative areas of activities to be scaled back or pause:** (See full information at the Global Fund, 2025, p. 6-8)



**Infrastructure upgrades**  
(e.g., those that have yet to substantially progress).



**Acquisition**  
of new vehicles, IT and laboratory equipment.



**Conference attendance / study tours.**



**Off-site workshop-style**  
standalone in-service training.



**Meeting costs for policy**  
development, coordination, validation, and dissemination.



**New Surveys,**  
studies, evaluations, and reviews.



Print materials and publication costs.



Behavior change programs/materials.



**PPE**  
(Personal Protective Equipment) that is not essential for staff or patient protection.



**Commemorative days,**  
generic mass media events and campaigns including related commodities.



Standalone advocacy efforts.



Single disease/service supervision.



Certain elements of program management.

Since each country's context is different, the Global Fund Country Team (CT) is working with PRs to discuss the specific activities to be paused.

### 3. What is Reprioritization and Revision?

As a first step in the “**reprioritization** and **revision**” process, the Secretariat communicates the reduction in allocation amounts to each country. This means that the original allocation for GC7, communicated in 2022, will be lowered. Countries will then decide which programs to cut, modify, maintain, or transfer to other funding sources (e.g., domestic funding). The reprioritization and revision process reduces the amount of grants. This contrasts with a slowdown, which is a temporary pause in the implementation of activities.

Reduced allocations for each country will be calculated in **June 2025**. The Secretariat will use a formula to calculate the amount per country, which is primarily based on unimplemented funds. These amounts will then be adjusted using several “*qualitative adjustments*,” including:



Alignment with the allocation methodology.



Implementing game-changing innovations such as Lenacapavir.



Maintaining critical GC7 interventions.



National buy-in for activities and co-funding commitments.

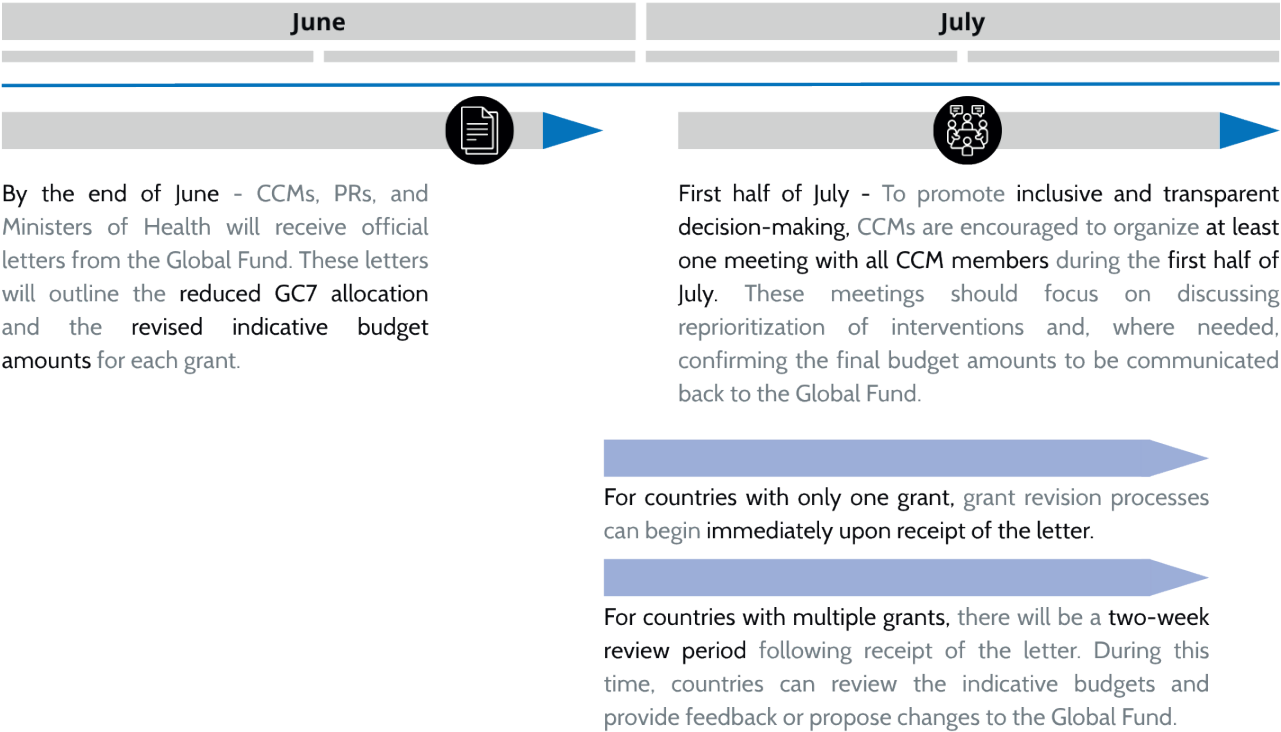


Country dependence on US government funding (PEPFAR, PMI).



Challenging operating environment.

The timeline for reprioritization and revision is as follows:



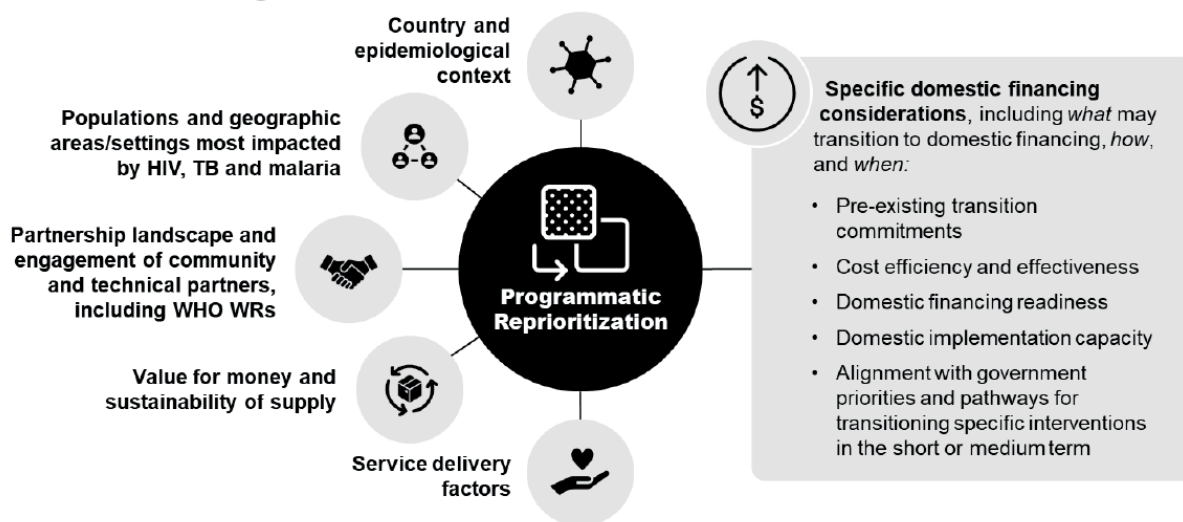
**The timeline for community engagement in GC7 reprioritization is very short. To participate in decision-making, it is important to prepare strong evidence-based arguments, exchange among constituencies, and contact your CCM member or the CCM Secretariat to understand key engagement opportunities.**

On June 5th, 2025, the Global Fund released the document [“GC7 Programmatic reprioritization approach: Protecting and enabling access to lifesaving services”](#). This document supports Country Coordinating Mechanisms (CCMs) and Principal Recipients (PRs) in decision-making for reprioritization of interventions in Global Fund grants for Grant Cycle 7 (GC7), while respecting the principle of country ownership and safeguarding the Global Fund’s mission to save lives.

Emphasized that, any changes must be tailored to each country's unique grant context, taking into account programmatic interdependencies and all available funding sources. It also highlights that, in preparation for Grant Cycle 8 (GC8), reprioritization decisions and grant revisions under GC7 should promote integration, cost effectiveness, and long-term sustainability of HIV, TB, and malaria activities within countries' primary health care services and community health systems.

**Reprioritization is intended to impact GC7 grants only.** As a first step ahead of this reprioritization exercise, Global Fund Country Teams have been working with CCMs and Principal Recipients in the past months to defer and/or pause specific activities under current Grant Cycle 6 (GC6) and GC7. The deferral/pause of these activities aims to maximize available funding for critical lifesaving services.

**Figure 1: Programmatic Reprioritization decisions should consider country context and all sources of funding**



Source: [Global Fund \(2025, p. 4\)](#)



## 4. General Considerations for Programmatic Reprioritization

Before initiating discussions at the country level to reprioritize, review, and adjust GC7 grants, communities should understand the broader programmatic context and be ready to present strong, evidence-based arguments, building a solid case to support national priorities.

When reprioritizing interventions, countries must ensure that equity, human rights, gender, and community systems remain central. Key services should be accessible and tailored to the needs of vulnerable and underserved populations, with efforts to reduce structural barriers like stigma and gender-based violence. Community systems, including peer support and community-led monitoring, must be preserved and strengthened.

Below are the main programmatic considerations ([see full considerations at: GC7 Reprioritization Approach, 2025](#)).

### **Equity, Human Rights, Gender and Community Systems**

Priority should be given to key interventions that reduce equity, human rights, and gender-related barriers, ensuring that the most affected populations can effectively access HIV, TB, and malaria services.

Availability of services alone is considered insufficient as interventions must be designed to ensure that key, vulnerable and underserved populations can access and benefit from them, with sustained focus in engaging communities across the cascade of care. Countries must work to remove structural barriers across health and community systems such as stigma, discrimination and gender-based violence. These barriers are further heightened in many settings, as a result of funding cuts for health.

Maintaining and strengthening community systems is essential to reaching the most affected populations. This includes preserving community peer cadres and ensuring that community-led service delivery mechanisms are optimized, remain functional and well-supported. This will require protecting investments that contribute to improved linkage and referral between formal and community health delivery platforms.

Integration into primary care services should be accompanied by efforts to make services accessible and acceptable to the most affected populations, including activities to strengthen competencies in delivering inclusive, respectful, stigma-free, gender-responsive and age-appropriate care.

Additionally, community-led monitoring (CLM) and accountability mechanisms are critical to identifying and addressing rights violations and ensuring that health systems remain responsive to the needs of those most at risk. However, it is important to avoid support for standalone or trial CLM programs at this time as per the information in this document.

**It is important that these areas of investment are not disproportionately reduced, given their immediate and long-term benefits in overcoming service access barriers. Prioritization decisions must be considered holistically at the country level and assessed for their cumulative impacts or unintended consequences on vulnerable populations, and their potential to worsen barriers in access to health care or health inequities.**

Prioritization of interventions in pregnancy needs to consider any reductions in HIV testing at antenatal care (ANC) in high burden areas, and nutritional support for pregnant women with TB, alongside reductions in sexual and reproductive health services and the removal of social protection for adolescent girls and young women, as these are likely to combine to increase maternal mortality rates and significantly worsen existing gender inequalities.

## **RSSH and Integration**

The Global Fund encourages countries to finance disease-specific interventions in a more integrated and sustainable way, embedding equity, human rights and gender equality in each intervention, while prioritizing systems strengthening for maximum impact and resilience.

Prioritization of disease-specific activities should be considered together with RSSH prioritization areas including human resources for health (particularly CHWs); supply chain systems; community-based and community-led service delivery and monitoring; data systems (HIS, LMIS, laboratory, etc.); integrated laboratory systems; and other health functions that support quality of and equitable access to disease-specific activities.

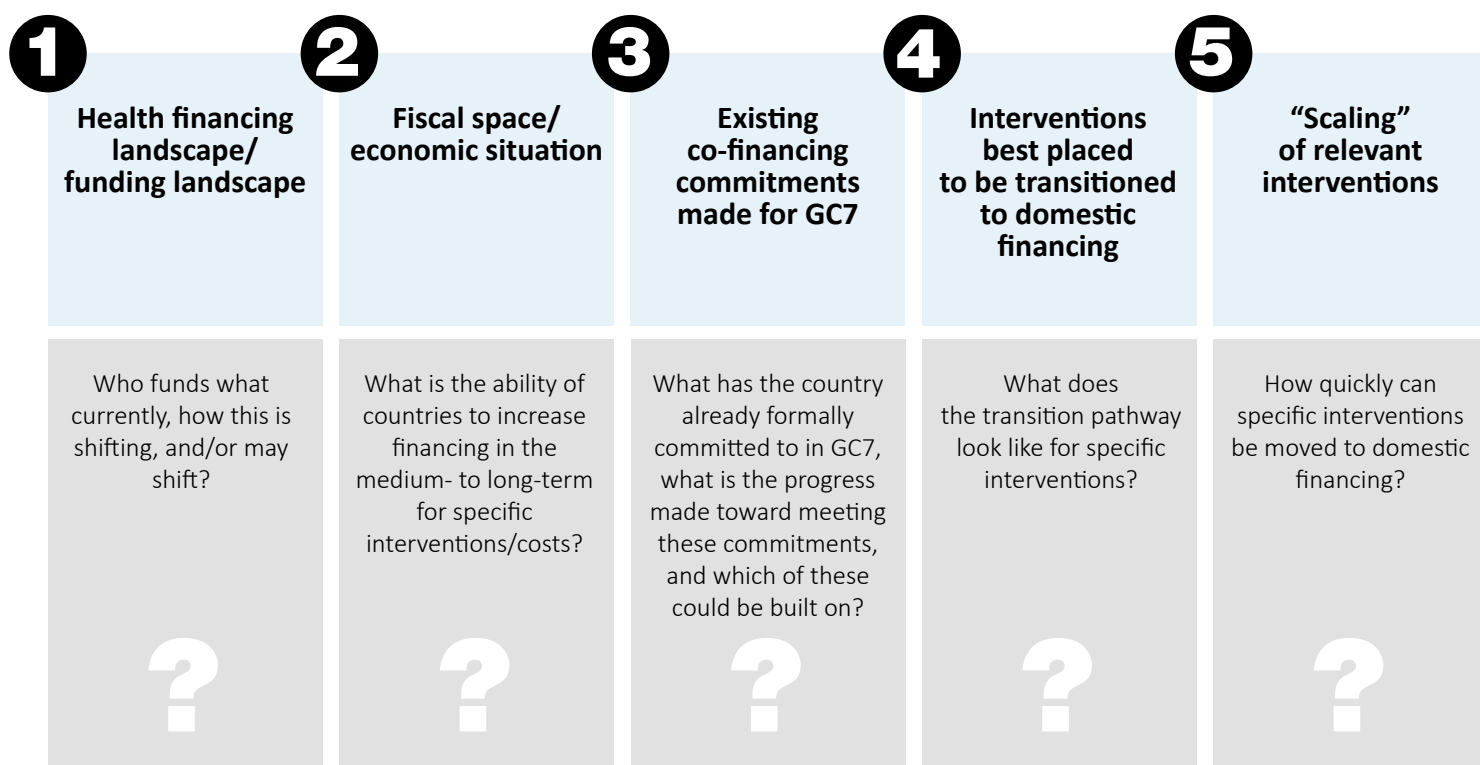
## **Value for Money**

The Global Fund requires all funding requests must demonstrate good value for money by maximizing and sustaining the quality, equity and impact of health outcomes in relation to the investment. This is assessed across five dimensions: economy, effectiveness, efficiency, equity and sustainability. Applicants are encouraged to review the Value for Money Technical Brief to understand how to demonstrate good value for money.

## Domestic financing

Within a country's funding landscape, domestic financing plays a critical role in sustaining essential interventions for HIV, TB, malaria and RSSH. Countries should identify which investments are best suited for transition to domestic financing in the short, medium or long-term. A context-specific and intentional approach to domestic financing is needed to avoid programmatic disruption, sustain critical interventions and avoid increasing dependencies on Global Fund financing when possible. Prioritization discussions should consider opportunities for decreasing reliance on Global Fund financing for critical interventions, especially given potential longer-term pressure on Global Fund resourcing.

Transitioning specific investments to domestic financing is context-specific and influenced by several factors, including:



To maintain lifesaving HIV, TB, and malaria services, programs must prioritize core interventions using all available funding sources, including domestic budgets, Global Fund investments, and contributions from partners.

## 5. Core Priorities for Reprioritization: Strategic Guidance for Countries

While reprioritization must be tailored to each country's specific context, the Global Fund has formulated some core priorities (see full considerations to prioritize and deprioritize at Global Fund - [GC7 Reprioritization Approach, 2025, pp. 10-68](#)):

### Core priorities for **HIV**:



#### **Save lives**

by prioritizing interventions in HIV treatment and care including procurement of ARVs and service delivery (e.g., ART delivery, support for treatment continuation), and diagnosis and management of TB and advanced HIV disease (AHD).



#### **Identify people living with HIV**

not on ART and link them to treatment, care, and support. Refer others to HIV prevention. Support HIV testing for people at higher HIV risk through cost-effective approaches (such as network-based testing including index testing and partner services), testing people with higher mortality risks such as in TB clinics, testing in services for sexually transmitted infections (STI), services providing care to key populations (KP) and through provider-initiated testing and counseling (PITC). Support testing at antenatal care (ANC) services in high burden settings, and ARV prophylaxis and early infant diagnosis (EID) for HIV-exposed infants.



#### **Protect primary prevention**

through cost-effective approaches such as the provision of condoms and lubricants. Protect PrEP provision for current PrEP users and prioritize new initiations among those at highest risk of acquiring HIV. Protect harm reduction programs focusing on the continuation of lifesaving interventions such as opioid agonist treatment and safe injecting. Provide PEP to all those potentially exposed to HIV. Integrate HIV prevention into existing sexual and reproductive health (SRH)/STI/ family planning (FP) services.

### Core priorities for **TB**:



#### **Diagnosis and treatment:**

Protect access to diagnosis and treatment, HIV testing and treatment for people with TB, TB screening in people with HIV, diabetes, and malnutrition, new screening and diagnostic tools, short-term treatment regimens.



#### **Active and targeted case finding:**

Focus on key and vulnerable populations and high-incidence areas, contact investigation prioritizing children, linkage to treatment and prevention, integration of active case finding with other diseases.



#### **Prevention:**

Maintain TB preventive therapy (TPT) for people living with HIV, symptom-based screening to initiate TPT.



#### **Cross-cutting:**

Surveillance, laboratory strengthening, and market development for TB diagnosis, community engagement throughout the care cascade, private sector engagement.

## Core priorities for **Malaria**:



### **Case management:**

Apply tailored, prioritized, and impactful strategies to reduce mortality, diagnosis at the community and facility levels, and access to quality services with a focus on leaving no one behind.



### **Disease prevention:**

Services targeted to the most vulnerable and those with the highest burden, vector control through the most effective and efficient distribution channels, and seasonal malaria chemoprevention (SMC) focused on children under 5 years of age. IPTp and chemoprevention should be fully integrated and covered by national funding, whenever possible.



### **Surveillance:**

Enhance tailored subnational approaches, reduce large-scale surveys, and increase ANC1 and LQAS surveillance, and monitoring of biological threats (TES, HRP2/3 deletions, insecticide resistance). Integrate and decentralize epidemic preparedness.



### **Cross-cutting:**

Human Resources for Health (HRH)/Community Health Workers (CHWs), supply chain, HMIS, and product selection to combat biological threats.

Access to lifesaving services by the populations and communities most impacted by the three diseases is a key principle for reprioritization. Therefore, beyond diagnosis, treatment and case management, it is important for communities to consider:

- **Interventions that remove barriers to accessing services, including gender and human rights related barriers;**
- **Essential health and community systems, including community-led services;**
- **Service delivery platforms.**

To help countries during decision-making, the Global Fund has developed a detailed document that outlines the **programmatic reprioritization approach**: [English](#), [French](#), [Spanish](#) and [Portuguese](#). The document orients on the structure of the GC7 modular framework. It proposes HIV, TB, malaria and RSSH interventions to consider for (de-)prioritization and suggests where to find efficiencies. Civil society and communities are encouraged to review what the document says about interventions that particularly matter to them. The document also includes specific considerations for interventions to reduce gender and human rights related barriers to HIV/TB services (page 23-24) as well as community systems strengthening (page 62-64).

## 6. Community Engagement in GC7 Reprioritization and Revision

According to the Global Fund guidelines, meaningful engagement of Civil Society Organizations (CSOs) and Key Populations (KPs) is a mandatory requirement during the grant cycle. Community dialogues are part of the [Country Dialogue](#), where different national stakeholders collaborate to develop a funding request to the Global Fund. Community dialogues is a space for civil society and key populations to reflect on their needs and priorities in responding to HIV, TB and malaria, an important means of ensuring their effective engagement in decision-making.

An inclusive CCM dialogue during grant reprioritization and revision will be critical. The Global Fund is encouraging transparent communication and inclusiveness, including civil society and community representatives. All major communications on the reprioritization and revision process will be sent to all CCM members, including community and civil society representatives, using their Grant Entity Data.

To ensure meaningful stakeholder engagement, the Global Fund recommends that CCMs plan for at least one meeting with all CCM members during the first half of July. This meeting should serve to review and discuss the reprioritization of interventions and to align on and confirm the final grant budget amounts to be submitted to the Global Fund, where applicable. This will be a key entry point for community engagement.

Once PRs have finalized the grant revision documents, these should be submitted simultaneously to both the Country Team (CT) and the CCM. At this stage, a second CCM meeting is recommended to allow all CCM members to review the proposed grant revisions in full. This review process ensures transparency and provides an opportunity to raise any concerns or feedback on the revised interventions, budgets, and implementation arrangements.

Following the review, the CCM Chair, Vice-Chair, and the civil society representative (if neither the CCM Chair or Vice-Chair is from civil society) will formally endorse the grant revision documents on behalf of the CCM, in line with standard Global Fund grant revision processes<sup>3</sup>.

As procedures may vary across countries, communities and civil society representatives are encouraged to proactively seek regular updates from the PR through the CCM Secretariat. A good practice from grant-making has been for PRs to present the proposed changes to the entire CCM, clearly outlining major shifts in modules, interventions, and implementation strategies.

---

<sup>3</sup> <https://resources.theglobalfund.org/en/grant-life-cycle/grant-implementation/grant-revision/> (pages 165-168)

During the period of review, adjustments and reprioritization for GC7, the early initiation of dialogue among community representatives increases the likelihood of ensuring a meaningful community engagement. This aligns with the [timeline](#) established by the Global Fund (2025, p. 3)

To conduct consultations with communities, broad and participatory social dialogues with CSOs and KPs, other CCM members, PRs and other key stakeholders, should be organized to review, adjust and reprioritize according to the needs identified by the countries.

**Are you a CCM member but have not yet heard about this process?**  
**Make sure that your contact details are updated.**  
**You can find more information here ([English](#), [Spanish](#), [French](#)).**



## 7. Quick Tips for Community Engagement

### 1. Understand the grant and funding landscape:

- Carefully review GC7 grant documents (e.g., detailed budget, performance framework).
- Assess implementation progress (e.g., Progress Updates / Disbursement Requests (PU/DRs), evaluations of specific interventions, community data on access barriers or service disruptions).
- Contact PRs, SRs, and SSRs to inquire about the status of grant activities, targets and absorption.

### 2. Understand the reprioritization and revision process:

- Carefully read the Global Fund's communication to CCMs (e.g., letters, programmatic reprioritization document, templates).
- Share and discuss these documents with the community and civil society to ensure a common understanding.
- Proactively clarify questions with your CCM representatives, the CCM Secretariat, Global Fund implementers, [the learning hub in your region](#), or Global Fund staff.

### 3. Ensure prompt and direct feedback from CCM community representatives:

- Agree on communication modalities between CCM community representatives and your constituency to ensure timely information sharing and reciprocal feedback.
- Reinforce channels of communication and collaboration between different constituencies to build advocacy alliances.



#### 4. Identify engagement opportunities:

- Proactively contact the CCM Secretariat and CCM community and civil society representatives to inquire about opportunities to participate in the reprioritization and review process (e.g., CCM meetings).
- Utilize existing contact points with PRs and SRs.

#### 5. Coordinate community and civil society input:

- Contact community representatives, civil society, and other community organizations to prepare for the CCM discussion and ensure early alignment on priority issues. This could include a community-wide review of grants to identify key priorities and opportunities to optimize and refocus outreach, seek more integrated approaches and greater cost-effectiveness and effectiveness, and seek opportunities to promote areas of intervention that countries can absorb.



## 8. Quick Tips for Programmatic Reprioritization

### 1. Transparency in the processes:

As a result of a recommendation from the Global Fund Board, the Global Fund has emphasized that the revision processes must be transparent, with adequate consultation and negotiation that includes communities, so that they take into consideration certain issues that directly affect them. Keep this in mind when you face engagement challenges.

### 2. Hold national governments accountable:

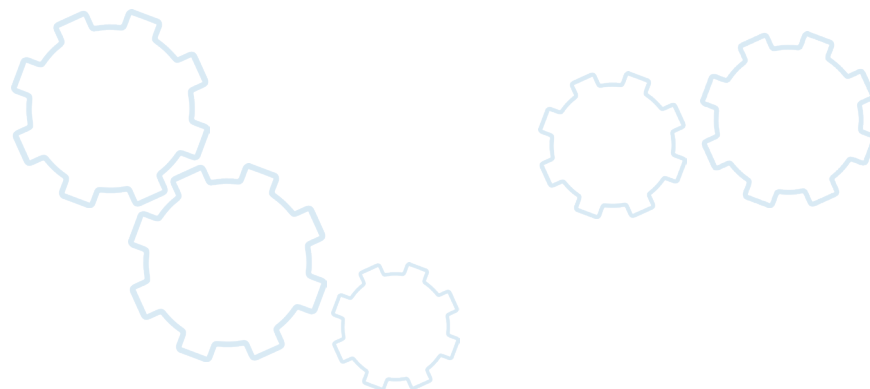
In the face of reduced external funding for health, the sustainability of responses to HIV, tuberculosis, and malaria must be guaranteed by national governments through increased domestic investment in health. In contexts with limited availability of external donor resources, governments must assume responsibility for their citizens. Community and civil society play an important role to advocate for governments to fill funding gaps.

### 3. Defend community-led responses:

Community-led responses must be at the center of discussions on the sustainability of national responses to diseases. Both civil society and governments must work together to initiate conversations about the long-term sustainability of the contributions of community-led programs. While there will be a push to integrate some services with government-run facilities, this is not always an effective strategy for reaching the most vulnerable populations. Political advocacy will be necessary to ensure that interventions to reduce gender and human rights-related barriers to services, as well as community-led services, will be maintained.

### 4. Promote a comprehensive approach to reprioritization:

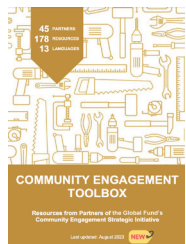
Community-led programs are key to promoting access to vital supplies. Without communities and civil society, many supplies will not leave the warehouses or reach those who need them. There is sufficient evidence to demonstrate that community-led services have added value that improves access to health services. The reprioritization of activities for GC7 should be discussed from a broad perspective, including all the elements that make up national responses, analyzing gaps, challenges, options, and areas of opportunity. Discussions should reflect the concerns the country will face, beyond particular sectors or interests.



## 7. Additional Resources

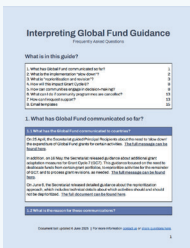


Here you can find a selection of tools, case studies, and guidance documents to support community engagement:



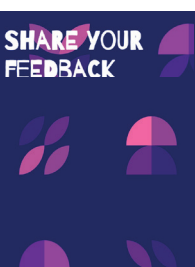
### Community Engagement Toolbox

[https://www.theglobalfund.org/media/10734/ccm\\_communityengagement\\_toolbox\\_en.pdf](https://www.theglobalfund.org/media/10734/ccm_communityengagement_toolbox_en.pdf)



### CHANGE Coalition – Community FAQ about reprioritization and revision

<https://globaladvocacydatahub.org/resources/Interpreting%20Global%20Fund%20Guidance%20-%20FAQ%20-%20EN.pdf>



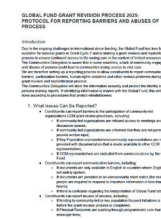
### CHANGE Coalition – Platform to share questions, request support and escalate challenges

[https://www.theglobalfund.org/media/10183/ccm\\_engagement\\_guidance\\_en.pdf](https://www.theglobalfund.org/media/10183/ccm_engagement_guidance_en.pdf)



### CHANGE Coalition – Data platform with grant data

<https://www.dataetc.org/projects/ccm/>



### GLOBAL FUND GRANT REVISION PROCESS 2025: PROTOCOL FOR REPORTING BARRIERS AND ABUSES OF PROCESS

[https://drive.google.com/file/d/1\\_EOs1AoNUQ0vmjhQ7bKn-U6pcPrronZ/view](https://drive.google.com/file/d/1_EOs1AoNUQ0vmjhQ7bKn-U6pcPrronZ/view)

Due to the ongoing challenges in international donor funding, the Global Fund has less funding available for national grants in Grant Cycle 7 and is starting a grant revision and reprioritization process to ensure continued access to life-saving care in the context of limited resources. The Communities Delegation is aware that in some countries, a lack of community engagement and abuses of process could lead to communities losing access to vital care. We are therefore setting up a reporting process to allow constituents to report communication barriers, participation barriers, human rights violations and other serious problems during the grant revision and reprioritization process. The Communities Delegation will store the information securely and protect the identity of persons making reports. If identifying information is shared with the Global Fund, this will be done according to procedures that protect whistleblowers.

The Global Fund- Country Resources: Grant Revision

The Global Fund- GC7 Grant Reprioritization: Updated Timelines